

i·SMARTGATE DEVICE

iSmartGate-01W

INSTALLATION MANUAL iSmartGate 01W

ENGLISH· REV.3

TABLE OF CONTENTS

1. iSmarGate-01W Instructions for use.....	3
1.1 Quick Starter.....	3
1.2 Safety Instructions.....	4
1.3 Examples of use of the application.....	5
2. Wiring the iSmartGate-01W	6
2.1 Wiring supply power	6
2.2 Wiring Load	7
2.2.1 iSmartGate GARAGE Mode Wiring.....	7
2.2.2 iSmartGate PULSE Mode Wiring.....	9
2.2.3 iSmartGate ON/OFF Mode Wiring.....	10
3. 3. Network.....	11
3.1 Step 1: Connecting your iSmartgate-01W to the Wi-fi router or AP.....	12
3.2. Step 2: Find the iSmartgate-01W on your LAN network.....	13
3.3. Step 3: iSmartgate-01W network options configuration.....	14
3.3.1 SSID Configuration.....	14
3.3.2 Wi-fi Security Settings Configuration.....	15
3.4 Step 4: AP / Wi-Fi router Configuration.....	16
3.5. Step 5: Verification.....	16
3.6. Troubleshooting Guide.....	17
4. How it works.....	18
4.1 GateName, Password, Port, Ipcast and Working Mode configuration.....	18
4.2 GateName configuration.....	19
4.3. Password Configuration.....	19
4.4. Working Mode Configuration.....	20
4.5. Port Configuration.....	20
4.6. IP Broadcast Configuration.....	21
4.7. Network Factory Default.....	23
5. Upgrade Firmware.....	24
6. iSmartgate App configuration	26
6.1 How to add a door.....	27
6.2 App Options.....	29

1. iSmarGate-01W Instructions for use

1.1 Quick Starter

The **iSmartgate-01W** works as a plug-in for any garage door. It comes with 2 relay outputs that can be controlled with any iOS / Android smartphone.

These 2 outputs need to be connected to the existing garage door's control panel.

In order to allow the **iSmartgate-01W** get connected to the smartphone, you will need either an **Access Point Wi-fi (AP)** or a router Wi-fi. The **iSmartgate-01W** will connect through Wi-fi to the router/AP, and so will do the smartphone, once it has the iSmartgate App installed. This, our smartphone and the iSmartgate device will be able to get connected each other.

Before proceeding with the installation, please read safety instructions in section 1.2

In order to allow the iSmartgate App get connected to iSmartgate-01W, you need to complete the following steps:

- Wire up iSmartGate01W to our garage control panel. *See section 2.*
- Configure the network requirements on the iSmartgate-01W. *See section 3.*
- Configure the iSmartgate-01W according to the desired mode. *See section 4*

Next, you need to put the next data, using the buttons and the display on the device:

1. The desired name for the door. The default name is "home", but you can change it for anyone you want. Just take into account that it has to be no more than 8 characters, in lowercase.
2. The desired password. The default password is "12345678". You can change it, just take into account that it has to be 8 numeric characters.
3. The IP Broadcast of our network. The default one is "192.168.1.255"
4. The network port. The default one is 8001.
5. The mode you want the device to work, The default setting is "Garage"

Lastly, open the iSmargate app on your smartphone, and follow MY GATES > **ADD GATE** . You will be asked for the following data, just be sure to complete all these fields with the same data entered in the iSmartgate Device:

1. Gate Name
2. Port
3. Password
4. Mode

It's Not necessary to put here the IP broadcast

NOTE

The iSmartgate-01W IS NOT AN AccessPoint (AP). It works as a CLIENT device (AP Client). Therefore, it requires an AP network device (AP Wi-Fi, Router Wi-Fi).

The smartphone needs to be connected via WI-FI to the same network where the iSmartgate-01W is.
(See section 6. iSmartgate App configuration).

Once the network device is configured with this two steps:

- **connected to the gate**
- **our telephone connected to Wi-Fi to the same LAN as the router** (with the parameters configured properly)

By opening the application on your smartphone you'll can open or close the door garage.

All settings can be made in a very simple way without specific knowledge of any programming language or PC.

1.2 Safety Instructions



The electrical installation of the iSmartgate-01W should be done by a professional.
Please read carefully all these instructions before installing and starting to use iSmartgate.



Please follow all the instructions in detail in order to avoid personal injuries or damage to third party devices.



The iSmartgate-01W is not adequate for really sensible installations or to control very precise processes, as either a WI-FI / Ethernet network failure or a power failure can not guarantee a secure control.



The iSmartgate-01W must not be used in any place where it can be in touch with explosive material or medical applications.

NOTE

VIRTUAL TO FACTUAL ELECTRONICS, S.L. will never be responsible for any possible injury or damage to people or objects that may occur due to an incorrect use or by not following these instructions. Additionally, VIRTUAL TO FACTUAL ELECTRONICS S.L. will not accept any responsibility for third party apps using it, or for any use of the iSmartgate-01W or its application, which is not specified in this manual.

1.3 Examples of use of the application

1. Garage Door Control (Open / Close)



2. Blinds Control (Open / Close)



3. Lighting Control, Irrigation Systems Control (ON / OFF)



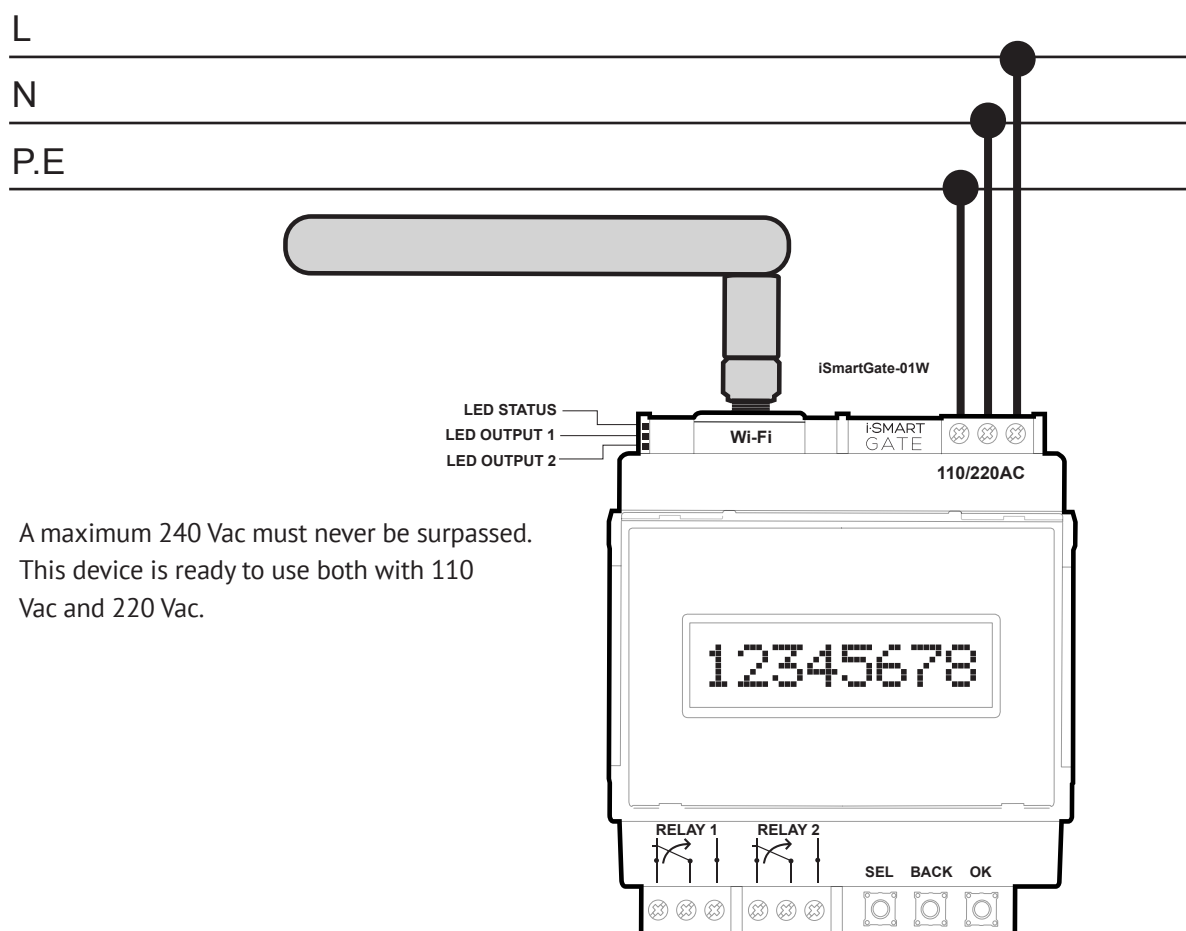
2. Wiring the iSmartGate-01W



The electrical installation of the iSmartgate-01W should be done by a professional. Please follow all the instructions in detail in order to avoid personal injuries or damage to third party devices.

2.1 Wiring supply power

Connect the wiring supply as it is shown in the following scheme.



A maximum 240 Vac must never be surpassed.
This device is ready to use both with 110
Vac and 220 Vac.

Figure 2. Wiring supply Scheme



Installation and Disconnection must be done without power supply in order to avoid possible accidents. All regulations and rules must be taken into consideration when installing the iSmartgate-01W device. The electrical installation of the iSmartgate-01W should be done by a professional.

2.2 Wiring Load



Installation and Disconnection must be done without power supply in order to avoid possible accidents. All regulations and rules must be taken into consideration when installing the iSmartgate-01W device. The electrical installation of the iSmartgate-01W should be done by a professional.

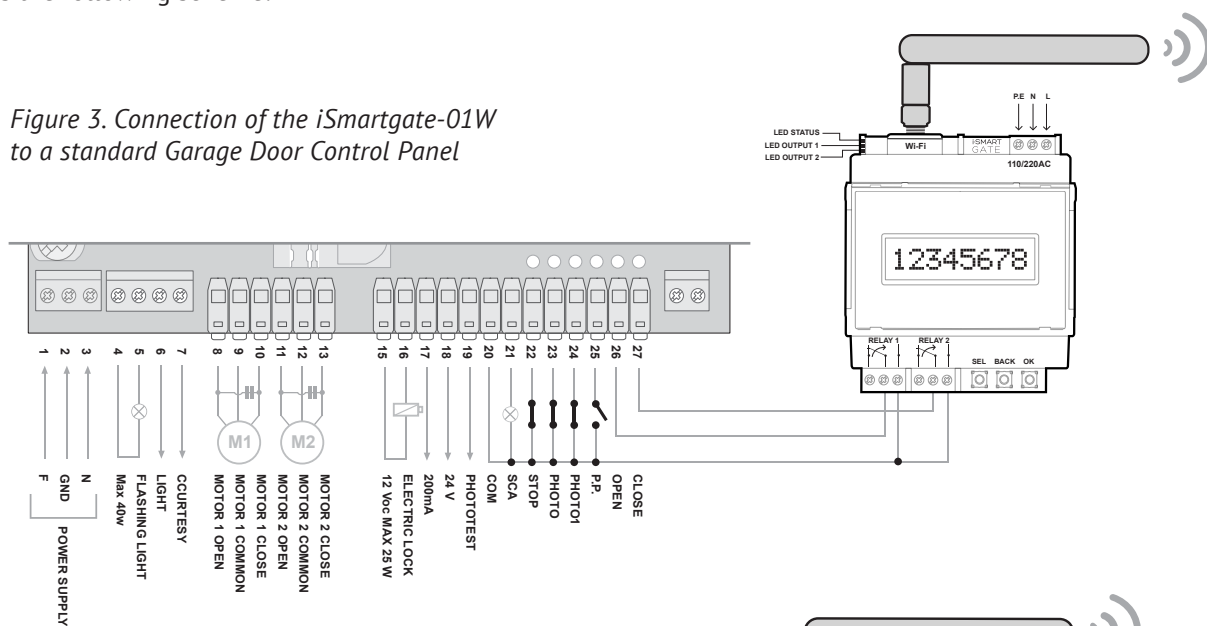


Before to connect the load to the device outputs, check figure 6 for the maximum current and voltage supported by iSmartGate-01W (<http://www.v2fe.com/how-it-works1.html>).

2.2.1 iSmartGate GARAGE Mode Wiring

The **iSmartGate-01W** has 2 voltage free outputs: RELAY 1 and RELAY2 , to connect with electric or electronic devices. If you want to control your Garage Door, you need to configure the **iSmartgate-01W** with the **GRG Mode** (Garage mode). If in our iSmartGate APP we have set up the door with **GRG MODE**, we have to connect the device as the following scheme:

Figure 3. Connection of the iSmartgate-01W to a standard Garage Door Control Panel



You can also choose to connect the iSmartgate-01W to the Garage Internal Wall Switch, as in the following scheme:

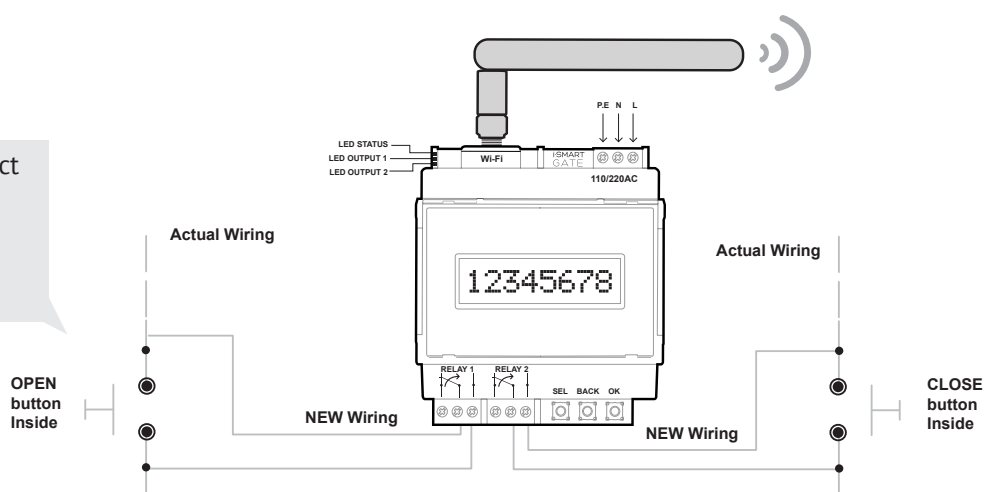


Figure 4a. Connect iSmartGate to your internal garage wall switch.

You can also choose to connect the iSmartgate-01W to the Garage Remote Controller, following this 3 steps:

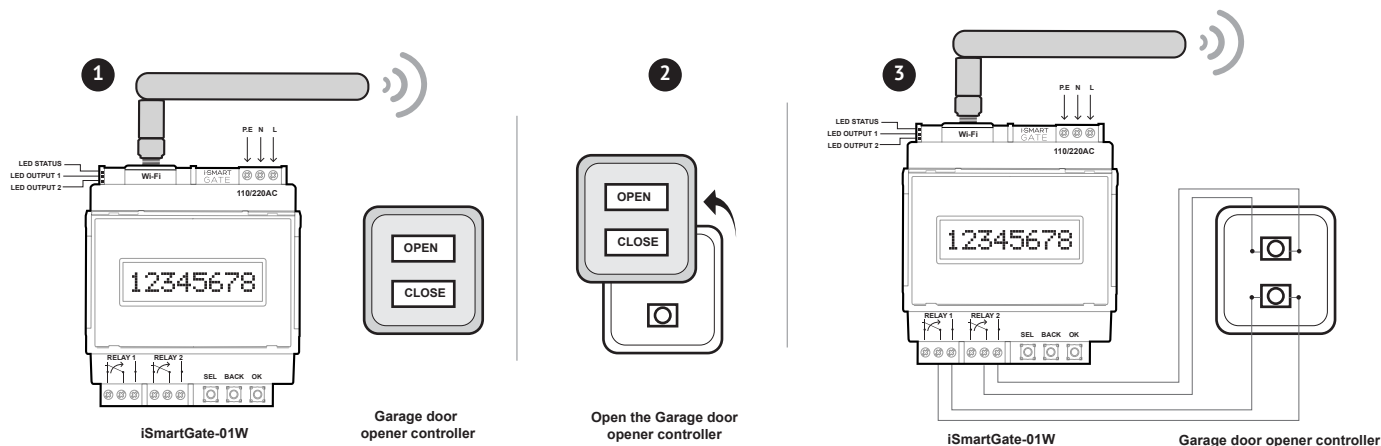


Figure 4b. Steps to connect iSmartGate to your garage remote controller

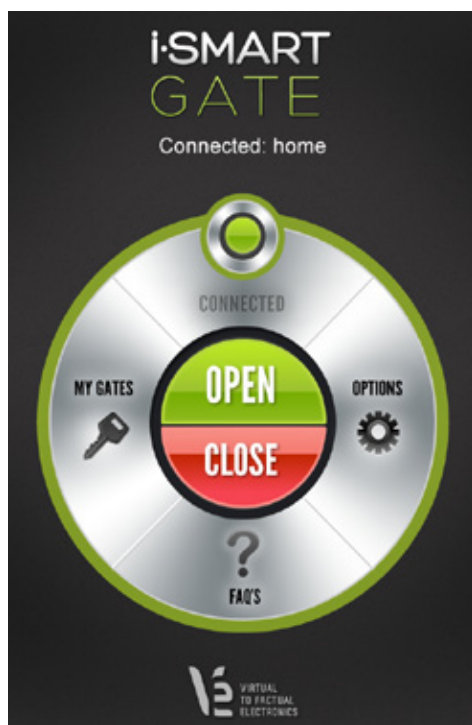


Figure 5. As soon as the iSmartgate App is connected, you will be able to read: "Connected" and the circle line will appear in green.

Once the iSmartgate App is configured and is able to connect to the **iSmartgate-01W** (see sections 3,4, 6), we are ready to tap on the app's **OPEN** button. Automatically, RELAY1 on the iSmartphone Device will be activated for 5 seconds, sending the instruction to open the door to the Garage Door Control Panel. On the other hand, as soon as we tap on the **CLOSE** button on our iSmartgate App on the smartphone, RELAY2 will be activated for 5 seconds, sending the instruction to close the door to the Garage Door Control Panel.

Function "GRG" or Garage is the default mode and the more suitable to open the Garage Door using the iSmartgate App. However, there are other modes available on the iSmartgate-01W that can be used with the app. (See sections 2.2.2 and 2.2.3)

2.2.2 iSmartGate PULSE Mode Wiring

As iSmartgate-01W has two free potential outputs, it allows to control opening and close of the following elements:

• Awnings • Blinds • Curtains

In order to do so, it is important to take into account which is the maximum ELECTRIC CURRENT at which work the electric motor you want to control, which should never surpass the values shown on *figure 6*.

In most cases, the existing control devices for those elements already come with a relay incorporated on it, so that we will not have to worry about the maximum electric current.

In case the electric motor of the device we want to control has higher DC current, you will need to add an INDUSTRIAL CONTACTOR between the **iSmartGate-01W** and the electric motor.

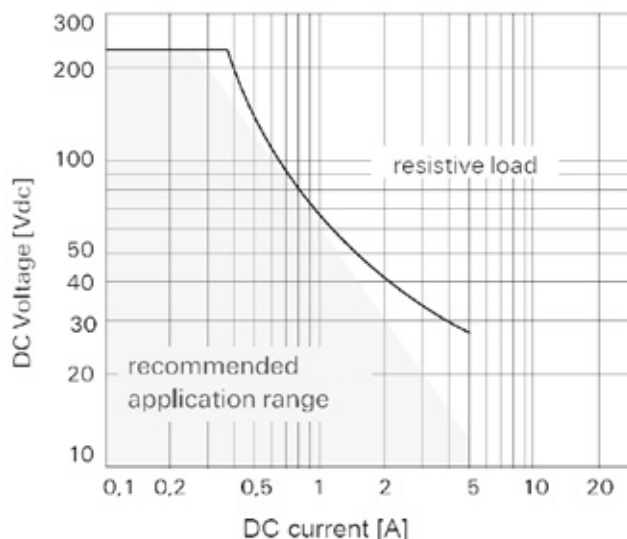


Figure 6. DC Current / DC Voltage for each of the RELAY outputs

In case the AC current of the motor we need to control is equal or below the data shown on *figure 6*, you need to install the **iSmartgate-01W** as follows:

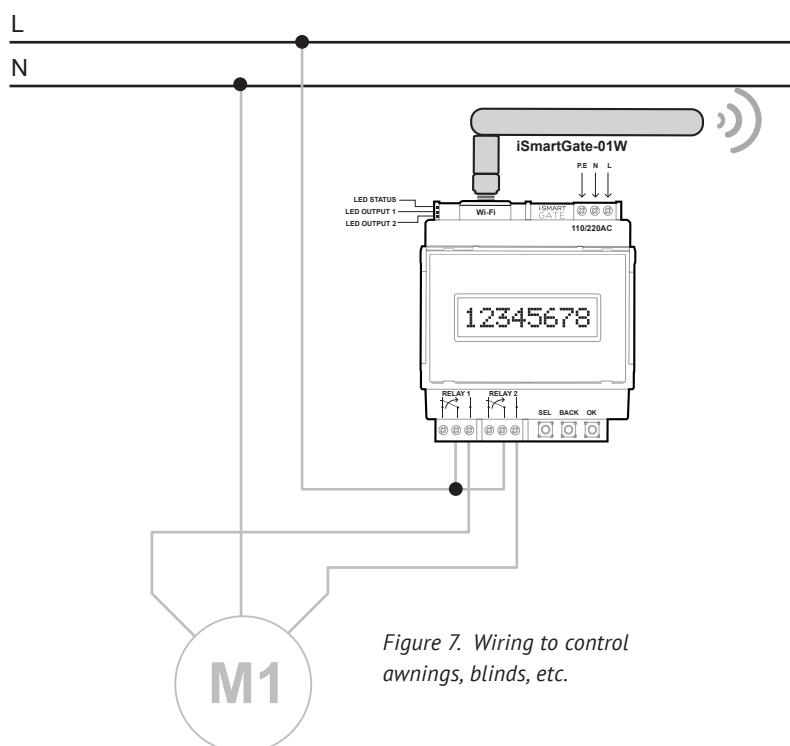


Figure 7. Wiring to control awnings, blinds, etc.



ATTENTION

The electric element connected to the iSmartgate Device needs to have its own limit switch in order to stop the action on a safe way at any time, one at the upper limit and other in the lower end of the process.

Once you have your smartphone connected to the iSmartGate-01W and configured with the **PUL (Pulse) MODE**, you will be able to raise or lower the blinds, awnings or curtains as explained below:

- As far as you tap **OPEN** and keep it pressed, the element (blind/awning, curtain) will keep lifting up, as **RELAY 1 (open)** will be activated. As soon as you stop tapping the OPEN button, the OPEN action will be stopped.
- When pressing **CLOSE**, the opposite happens: the element (awning, blind, curtain) will start going down, as **RELAY 2 (CLOSE)** will be activated. As soon as you stop tapping the CLOSE button, the action will stop.

2.2.3 iSmartGate ON/OFF Mode Wiring

Last, let's see how the **iSmartgate-01W** can also be configured as a ON/OFF mode (O/O).

Using this mode, you will be able to control the on and off of domestic elements such as lighting elements, electric appliances, etc..

ON/OFF Mode allows the iSmartGate-01W to switch indepently 2 different LOADS (on and off).

- When you tap **OPEN** on the iSmartgate App on your smartphone, the **LOAD connected to Output1 will go ON**. When tapping **OPEN** again, the **LOAD connected to Output1 will go OFF**.
- When you tap **CLOSE** on the iSmartgate App on your smartphone, the **LOAD connected to Output2 will go ON**. When tapping **CLOSE** again, the **LOAD connected to Output2 will go OFF**.

You need to install it as the *Figure 8* shown below:

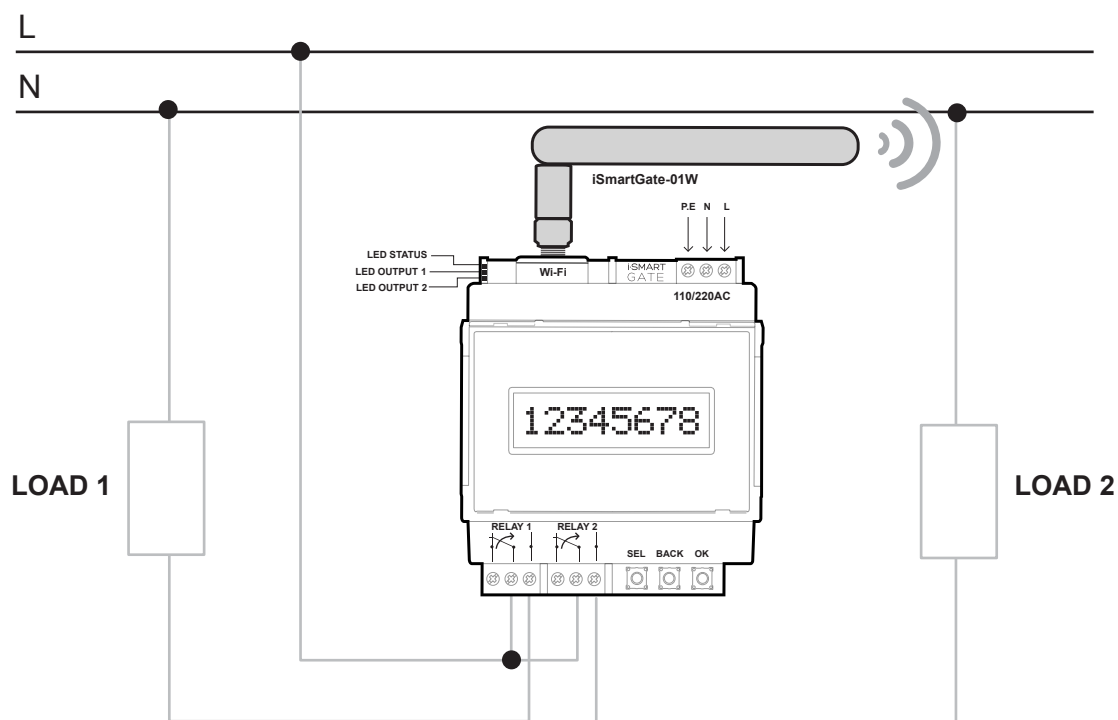


Figure 8. Load control in MODE ON/OFF



Do not exceed the RELE'S output maximum DC current. See graphic on *Figure 6*.



Never use iSmartgate to control safety or electromedical equipment from whom a life of an individual or an animal can be depending on.

3.Network

The **iSmartgate-01W** is a network device which needs to connect to the **home's WLAN** where it is going to be used. This WLAN needs to provide a Wi-Fi device protected with password. Usually, the standard router used for domestic Internet connections is already Wi-fi, and is the one you can easily configure to **connect your smartphone to the iSmartgate-01W** (Connection to Internet is not necessary).

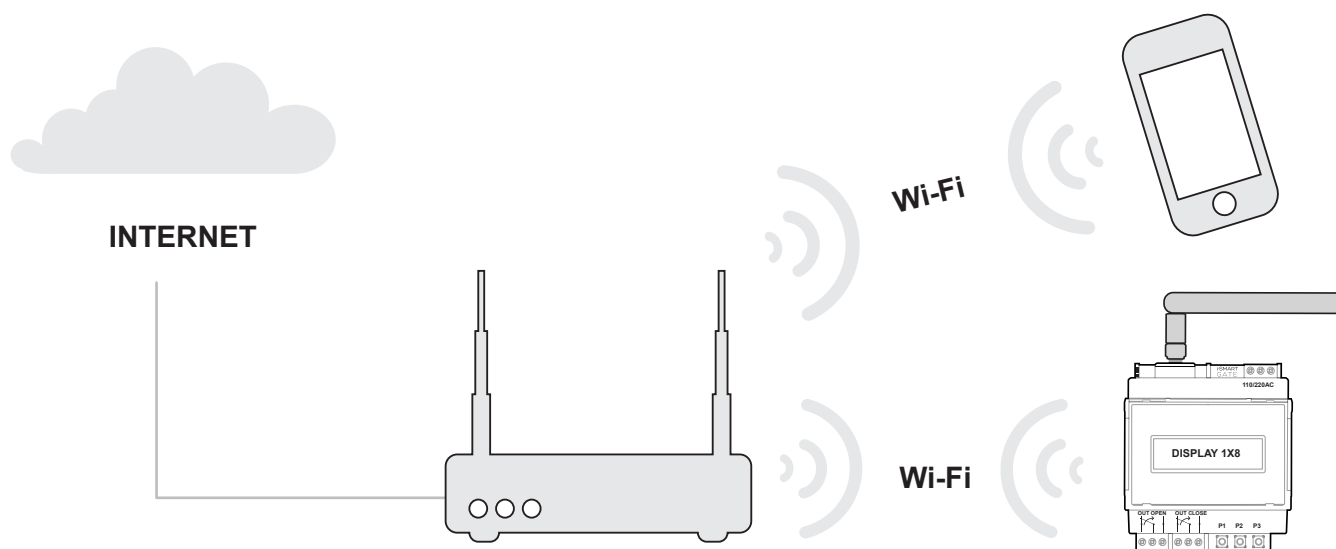
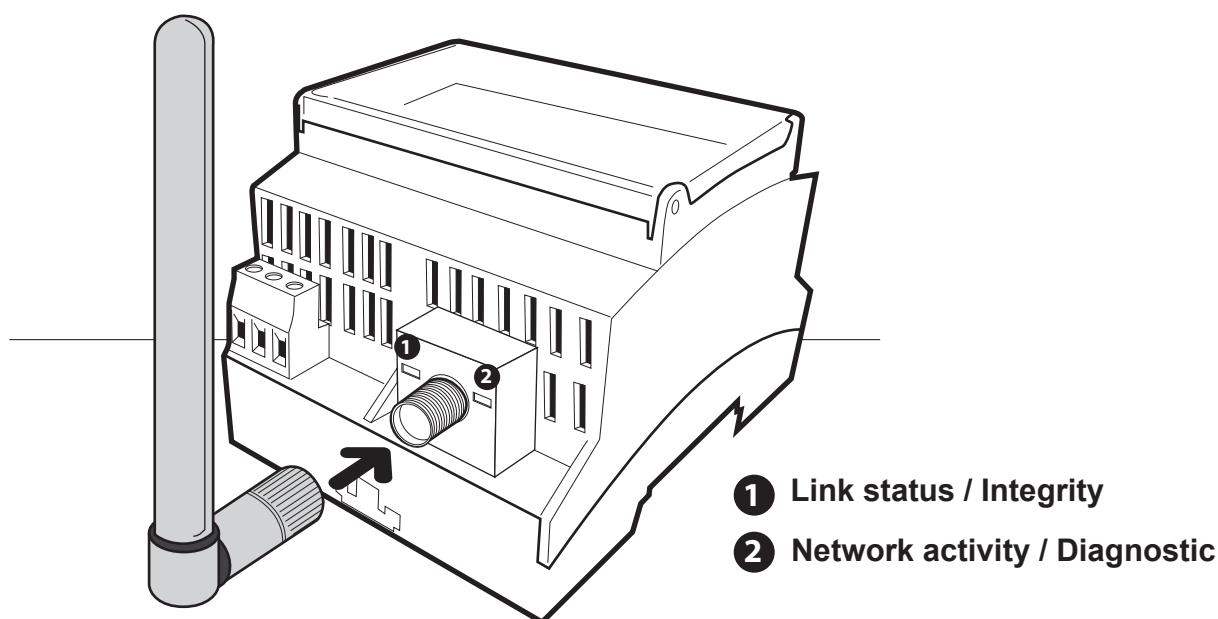


Figure 9. Network connection scheme

The **iSmartgate-01W IS NOT AN AccessPoint (AP)**. It works as a CLIENT device (AP Client). Therefore, it requires an AP network device (AP Wi-Fi, Router Wi-Fi) and a Windows PC to set up.



LED INDICATORS

YELLOW

- **Constant light:** iSmartgate-01W is connected to an Access Point
- **Flashing light:** iSmartgate-01W is searching available Wi-fi connections to connect.

GREEN: Network activity

iSmartgate Network configuration instructions:

3.1 Step 1: Connecting your iSmartgate-01W to the Wi-fi router or AP

Do not switch on your iSmartgate device yet.

As your **iSmartgate-01W** is an AP client, it has no instructions on which Wi-fi AP is the one it should connect, so it will connect to the first AP non WEP/WPA password protected Wi-fi available.

Therefore, we need to configure our Wi-fi AP or Wi-Fi router disabling the password, so that the AP remains open.

Please take into account that you have to look on your smartphone if there are other open AP Wi-fi (not password protected), as the iSmartphone-01W can connect to them.

If this is your case, you also need to change your router's or Wi-fi AP SSID, naming it "Connect". This way, as the **iSmartgate-01W** finds more than one open Wi-fi network connection, will choose the one which name's starting with "Connect".

Once we have set up all these points, we are ready to switch on the **iSmartgate-01W**, and the yellow led should be standing on, while the green led should be flashing.

3.2. Step 2: Find the iSmartgate-01W on your LAN network

Once the **iSmartgate-01W** is connected to the AP or WI-fi router and switched on, we will use a computer connected to the same network in order to find it and therefore configure the iSmartgate device.

You have to connect through the ethernet, your PC to the AP or Wi-fi router.

In order to access to the iSmartgate-01W internal configuration, you will need to use **Digi Device Discovery** (if you don't have it, you can download it at www.v2fe.com).

Then you need to run the program, by clicking "**dgdiscvr.exe**" (*Digi Device Discovery is owned by Digi Inc.*)

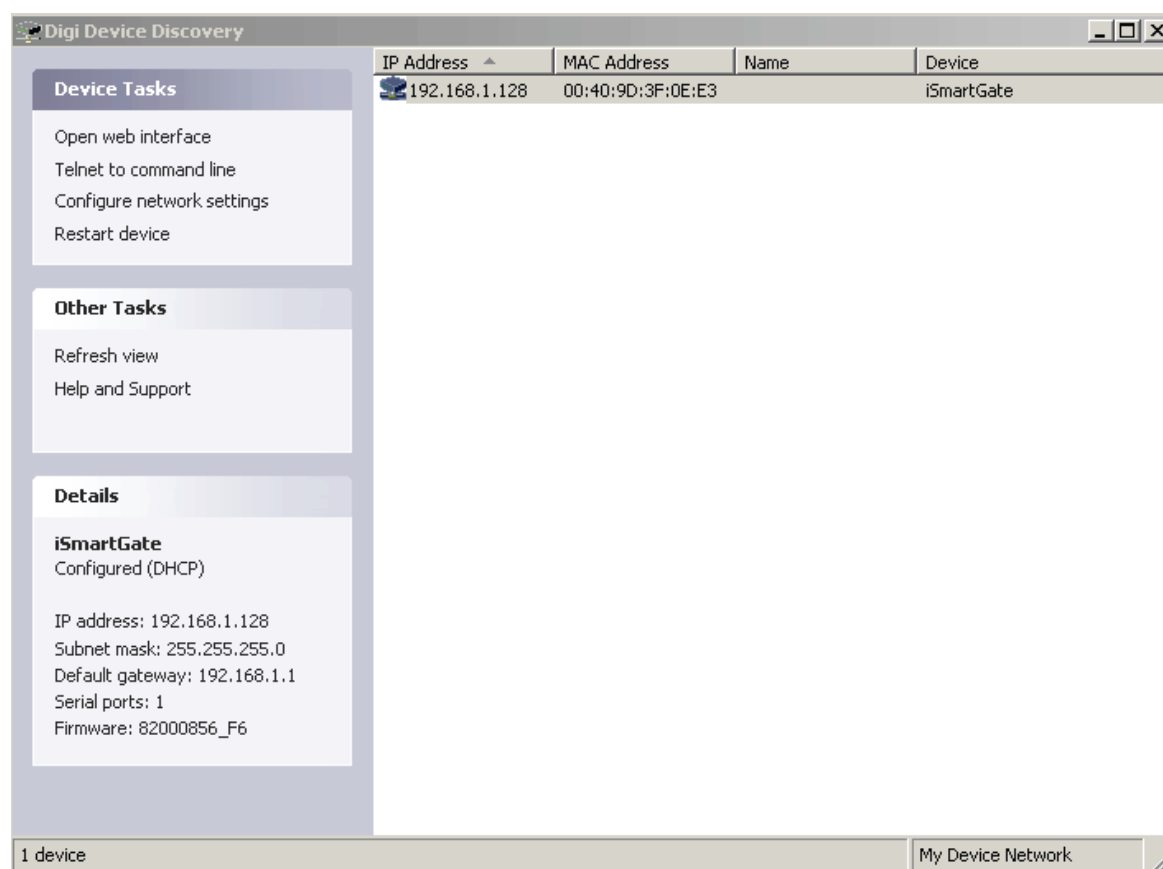


Figure 10. Seaching the iSmartgate

In case the **iSmartgate-01W** device does not appear on the screen, please wait for 5 minutes and if it still is not showing up on the screen, click on "Refresh View". If you have repeatedly searched the **iSmartgate-01W** with no success, it may be connected to another open network, not ours, this means that you need to go back to step 1 and start the process again.

If you have found the iSmartgate-01W, please move on to step 3.3.

3.3. Step 3: iSmartgate-01W network options configuration

Once we have found the iSmartgate-01W using Digi Device Discovery Software, you have to click on "Open Web Interface".

You have to fill the following fields to enter:

LOGIN: isg

PASS: 12345

Once introduced, you will get access to the **Web Configurator**.

On this step, you will configure the **iSmartgate-01W** so that it connects to the AP or Wi-fi router your desired SSID and password. At this point, your AP or wi-fi router is not 100% configured as you have temporally disabled its password and it is possible that you have also needed to change its SSID. Therefore, now it's the moment to set up the **iSmartgate-01W** with the desired parameters, so that later it will connect to your network with those same parameters.

3.3.1 SSID Configuration

The screenshot shows the 'iSmartGate Configuration and Management' web interface. On the left is a navigation menu with links: Home, Configuration (Network), Applications (RealPort), Management (Connections), Administration (Update Firmware, Reboot), and Logout. The main content area is titled 'Network Configuration' and contains a 'Press Apply for changes to take effect.' button. Below this, the 'WiFi LAN Settings' section is expanded, showing fields for 'Network name' (with a '(SSID)' hint), 'Country' (set to 'United States'), 'Channel' (set to 'Auto-Scan'), and 'Transmit power' (set to '15 dBm'). There are three radio button options: 'Connect to any available WiFi network', 'Connect to access point (infrastructure) networks only' (which is selected), and 'Connect to peer-to-peer (ad-hoc) networks only'. An 'Enable Short Preamble' checkbox is also present. An 'Apply' button is at the bottom of the settings section. Below the settings, there are links to 'WiFi Security Settings', 'WiFi 802.1x Authentication Settings', 'Network Services Settings', and 'Advanced Network Settings'. At the very bottom, a copyright notice reads: 'Copyright © 2011-2013 Virtual To Factual Electronics. All rights reserved. www.v2fe.com'.

- **Network Name;** Please write here the name you want for your Wi-fi network, as you will later need to give the same input data to your AP or Wi-fi router.
- **Connected to Access Point:** You need to select this option so that the iSmartgate-01W only connects to AP or routers.

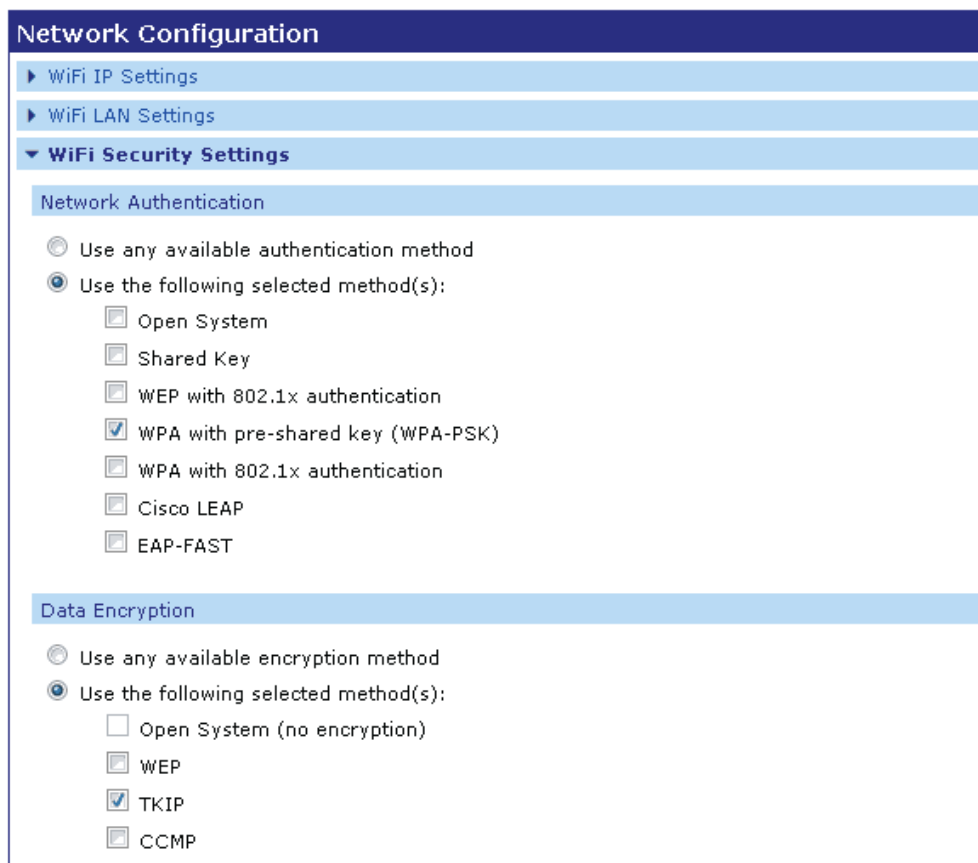
Lastly, if desired, you can configure channel and country.

Click **"Apply"** (not event Reset device).

3.3.2. Configuración de las WiFi security Settings

Click on "**network**" and then click on "**WIFI Security Settings**".

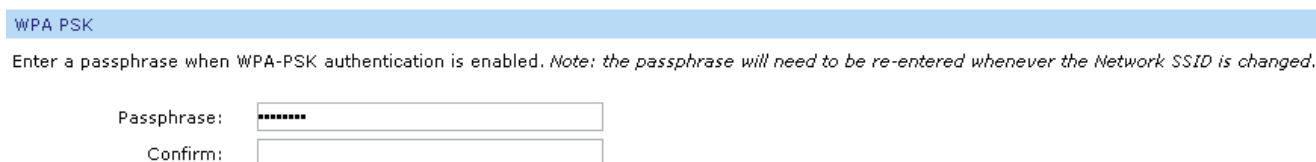
V2FE recommend to use the **WPA encryption**, configuring the computer iSmartGate-01Was follows:



Network Configuration

- ▶ WiFi IP Settings
- ▶ WiFi LAN Settings
- ▼ **WiFi Security Settings**
 - Network Authentication**
 - ☐ Use any available authentication method
 - ☒ Use the following selected method(s):
 - ☐ Open System
 - ☐ Shared Key
 - ☐ WEP with 802.1x authentication
 - ☒ WPA with pre-shared key (WPA-PSK)
 - ☐ WPA with 802.1x authentication
 - ☐ Cisco LEAP
 - ☐ EAP-FAST
 - Data Encryption**
 - ☐ Use any available encryption method
 - ☒ Use the following selected method(s):
 - ☐ Open System (no encryption)
 - ☐ WEP
 - ☒ TKIP
 - ☐ CCMP

Last, set up the **WPA password**. Then we'll have to insert it to the Access Point o Router.



WPA PSK

Enter a passphrase when WPA-PSK authentication is enabled. *Note: the passphrase will need to be re-entered whenever the Network SSID is changed.*

Passphrase:

Confirm:

Click on "**Apply**".

iSmartGate-01W device will show a message to tell us that it took one minute to calculate encryption.

Once the minute ends, **reset the device (Administration -> reboot)**.

3.4 Step 4: AP / Wi-Fi router Configuration

Once you have configured the **iSmartGate-01W** with the SSID and the safety options, you need to **configure the AP or Wi-fi router with same data**.

Please check that:

- The PC where the **dgdiscvr.exe** is running, is **correctly connected to the AP or Wi-fi router through an ethernet connection**.
- The iSmartGate-01W is **close to the AP or router**, in order to avoid coverage problems.

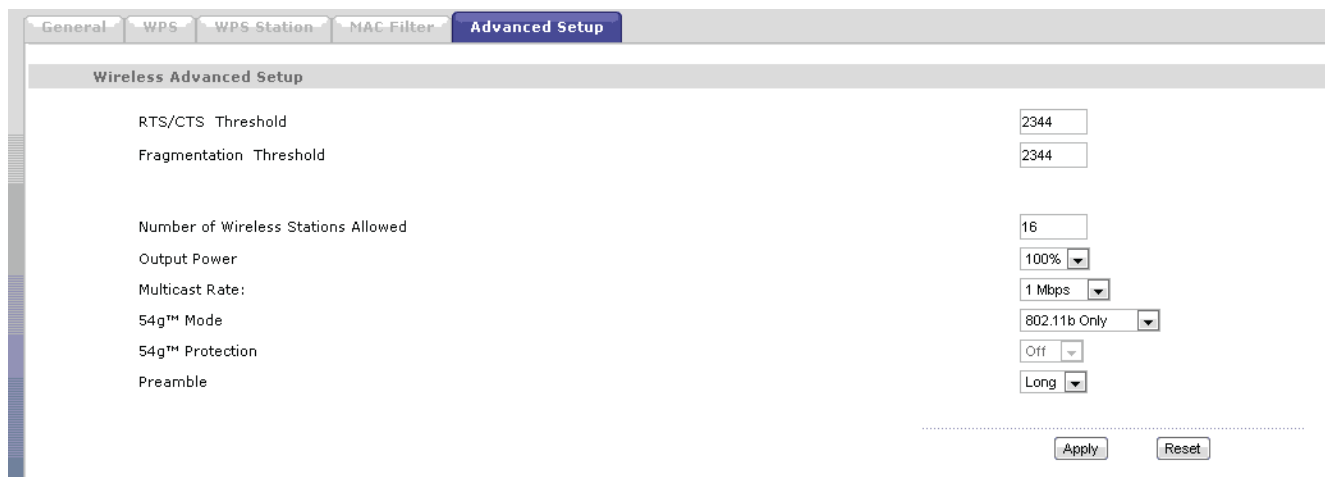
Once you have finished configuring your AP or wi-fi Router, switch off, and the switch on again your **iSmartgate-01W**.

Wait until the yellow LED on your iSmartgate stays illuminated (not flashing) to move on to the next step.
If this doesn't happen, go back to step 3.6.



To avoid communication errors, you should **set the parameters in WiFi AP or Router**, which will connect the equipment iSmartGate-01W, as follows:
(in general way)
Wifi Settings -> ADVANCE -> 54G MODE -> 802.11b Only

Reference example:



Setting	Value
RTS/CTS Threshold	2344
Fragmentation Threshold	2344
Number of Wireless Stations Allowed	16
Output Power	100%
Multicast Rate	1 Mbps
54g™ Mode	802.11b Only
54g™ Protection	Off
Preamble	Long

3.5. Step 5: Verification

If the AP or Wi-fi router has been successfully configured, the **iSmargate-01W should be connected to it**. To verify it, you need to run the **dgdiscvr.exe** and, if this software is able to find the iSmartGate-01W, **the network configuration has been successfully completed**.

In any other case, go back to step 3.6.

3.6. Troubleshooting Guide

If you are reading this section, it means that after trying to configure both **iSmartGate-01W** and **AP**, with our SSID and security settings, **it has not been possible to connect them.**

Firstly, it is really important to be sure that you have typed exactly **the same SSID and password on both network devices** (AP or Wi-fi router and iSmartgate Device).

At this stage, it is not possible to access the **iSmartGate-01W**, as it will try to connect to a network which will have incorrect SSID or password.

Therefore, you will need to RESET the iSmartGate Device to the default factory settings:

1. Press the SEL button on the iSmartgate-01W until the display shows: **"6-ResNet"**
2. Press OK
3. You will be asked again if you are sure to RESET the network configuration. Press OK.
4. You will be asked again if you are sure to do so. Press OK.
5. Wait until the iSmartGate-01W restarts.

At this moment, the iSmartgate-01W will start again to search for an open Wi-fi network to connect. Please go back to section 3.1.

4. How it works

In order to configure the **iSmartgate-01W** parameters, you have to use the **three buttons** and use them according to the information appearing on the **display**.

Reminder:

- **BUTTON 1: SEL**

Selection Function: It will help you navigate through the different available options.

- **BUTTON 2: CANCEL/BACK/MODIFY**

This button will allow you to go back to the main menu or the previous selected option.
When we are typing data, this button rotate the alphanumeric value.

- **BUTTON 3: OK**

Confirmation button. Once you press it, you will either enter in the selected option, or accept the selected parameters.

Once the iSmartgate is switch on, the display screen will inform you about all the selected configurations.

4.1. GateName, Password, Port, Ipcast, and working Mode configuration

In order to control the **iSmartgate-01W** with our smartphone, it is important to ensure a secure connection between them, avoiding third party equipments the access to it. To provide this safety connection, the iSmartgate-01W needs to have the following parametres completed successfully;

- **GateName:** The door's name
- **Password:** Numeric password to access the door control
- **Port:** Network Port using the TCP/IP communication.
- **Working Mode:** "Garage", "Pulse", or "On/Off".

Those 4 parameters, all together, will create a unique code that will be used to encrypt all the communications.

This is why those 4 parameters need to be introduced exactly the same way on the **iSmartgate-01W** and our smartphone.

Additionally, you will also have to configure your network's IP broadcast to ensure that the device can transmit correctly. (See section 4.6)

4.2 GateName configuration

This parameter will allow you configure the door's name, with the same data on your iSmargate App on your smartphone. The default door's name is "**home**". if you want to change it, please follow this steps:

1. Press the SEL button until the display screen shows the following info: "**2-SET GN**"
2. Press OK
3. The display message will ask you if you are sure you want to change your door's name. Press OK.
4. As you press OK, the existing door's name will appear on the display. You will have to change the door's name one character at a time. The character flashing is the one you are changing. To do that, simply push the **CANCEL** button (button #2). To move on to the next character, press **SEL button** (button #1).
5. Once you have the desired door's name, press the OK button (button #3).
6. If everything worked well, you will read "SAVED!" on the display.

4.3 Password Configuration

This parameter helps you configure your door's password. The password entered in the iSmartgate-01W will have to be the same than the one on your iSmartgate App.

The default door's password is "**12345678**". This field only accepts numeric characters.

In order to change the default password, which is strongly recommended, please follow this steps:

1. Press button 1 until the tet "**1-SET PW**" appears on the display.
2. Press OK (button 3).
3. The display message will ask you if you are sure you want to change your door's password. Press OK.
4. As you press OK, the existing password will appear on the display. The numeric character which is flashing is the one you are about to change. To do so, press button #2. To move on to the following character, press button SEL (button #1).
5. As soon as you have the door's desired password, press the OK button (button #3).

4.4. Function Mode Configuration

This is a very important parameter as it will decide the way the iSmartgate-01W works.

As with the previous configurations, the selected mode will be the same running on your iSmartgate App on your smartphone. The default mode for this parameter is **"Garage"**.

If you want to change it, just follow these steps:

1. Press the button #1 until it shows the following message: **"3-TYPE"**
2. Press OK (button #3)
3. The display message will ask you if you are sure you want to change the function mode. Press OK.
4. As you press the button #1, you will be able to navigate through all the existing modes.
5. As soon as you see on the display the desired Function mode, press the OK button (button #3).

4.5. Port Configuration

This is the network parameter which defines the port in which the communication will be realized. You don't need to modify it, unless you have more than one iSmartgate device in the same LAN/WLAN network. If this is the case, you will need to select a different port for each of them, bearing in mind that they have to be comprised between port 8000 and 65535.

The default port configuration is **"8001"**.

If you want to change it, just follow these steps:

1. Press the button #1 until it shows the following message: **"3-PORT"**
2. Press OK (button #3)
3. The display message will ask you if you are sure you want to change the door's network port. Press OK (button #3).
4. As you press OK, the current enabled network port will show up on the display. The numeric character which is flashing is the one you are about to change, to do that press button #2. Once it is correct, you can move on to the next character pressing the SEL button (button #1).
5. Once you have the desired port selected, press OK (button #3).

4.6. IP Broadcast configuration

Network parameter. The iSmartgate-01W uses Broadcast frames.

As each network can have a different private IP, you will need to configure your IP broadcast depending on your network settings.

In order to find your network IP broadcast, you need to follow these steps:

On a windows PC:

1. Go to **Menu > Commands** or Execute and type "CMD"
2. Once the new screen opens, type "ipconfig"

```

C:\Windows\system32\cmd.exe
ipconfig

Sufijo DNS específico para la conexión. . : Home
Vínculo: dirección IPv6 local. . . : fe80::1816:ca5:5ebf:ca9d%11
Dirección IPv4. . . . . : 192.168.1.130
Máscara de subred . . . . . : 255.255.255.0
Puerta de enlace predeterminada . . . . : 192.168.1.1

Adaptador de Ethernet Conexión de área local:

Estado de los medios. . . . . : medios desconectados
Sufijo DNS específico para la conexión. . :

Adaptador de túnel isatap.Home:

Estado de los medios. . . . . : medios desconectados
Sufijo DNS específico para la conexión. . : Home

Adaptador de túnel Conexión de área local* 2:

Sufijo DNS específico para la conexión. . :
Dirección IPv6 . . . . . : 2001:0:5ef5:79fd:ccf:3c38:3f57:fc7d
Vínculo: dirección IPv6 local. . . : fe80::ccf:3c38:3f57:fe7d%15
Puerta de enlace predeterminada . . . . : ::

C:\Users\Joan>
  
```

Figure 12. Web interface Configuration.

Search for the following data: IP and MASK which consists of four numbers, separated by 3 points.

In order to know your IP Broadcast, take as reference point your IP Address. Look on your mask for any zero number. Then, substitute the value contained on that same position on the IP address for 255.

Example:

IP	192	.	168	.	1	.	130
MASK	255	.	255	.	255	.	0
IP Broadcast	192	.	168	.	1	.	255

The default iSmartgate-01W's IP broadcast address is "**192.168.1.255**".

If you need to change it, please follow these steps:

1. Press #1 until the display shows the following text: "**5- IPcast**"
2. Press OK (button #3)
3. The display message will ask you if you are sure you want to change the door's network port.
Press OK (button #3).
4. As you press OK, the existing IP broadcast number will appear on the display. You will have to change the IP broadcast number one character at a time. The character flashing is the one you can change, pushing the CANCEL button (button #2). To move on to the next character, press SEL button (button #1).
5. As soon as you have the first number defined, press OK (button #3).
6. Now, the second number of the IP broadcast will appear on the display. Follow the same action than in step 4.
7. As soon as you have the second number defined, press OK (button #3).
8. Now, the third number of the IP broadcast will appear on the display.
Follow the same action you have done in steps 4 and 6.
9. As soon as you have the third number defined, press OK (button #3).
10. Now, the fourth number of the IP broadcast will appear on the display. Repeat the same process you have done to change the other numbers.
11. As soon as you have the fourth number defined, press OK (button #3).

NOTE

The default configuration of the iSmartgate-01W is the following:

- **GATE NAME:** "home" (lowercase)
- **PASSWORD:** "12345678"
- **PORT:** "8001"
- **Ipbroadcast:** "192.168.1.255"
- **MODE:** "Garage"

4.7. Network Factory Default

If you are not able to find the **iSmartgate-01W** using the **Digi Device Discovery software**, it is very probable that you have a different static IP adress on your network. If this is your case, you will need to reset your device, by using the function "**Restore Network**".

"**Restore Network**" function allows the iSmartgate-01W activate the internal DHCP, and therefore being able to restore the default configuration.

Restore Network DOES NOT MODIFY or DELETE:

- **Current selected network's port**
- **Current Gate's Name**
- **Current Gate's password**
- **Current selected Mode**
- **Current selected IP broadcast**

How to use the Restore Network function:

1. Press button #1 untile the display shows the option: "**6-ResNet**"
2. Press OK (button #3)
3. Now the display will show a message asking if you are sure to RESET the network.
Press OK (button #3).
4. You will be asked to confirm again. Press OK (button #3).
5. Wait two minutes to complete the process.

5. Firmware Upgrade

Virtual to Factual Electronics, on its continuous effort to provide better functionalities to its products, may be frequently publishing software upgrades, that can be updated in your **iSmartgate-01W**.

In order to upload a new firmware to your iSmartgate-01W, you will need to download the **iSmartGateLoader PC software**, available for Windows, from <http://www.v2fe.com/downloads.html>

Once you run this software, the following window will show up:

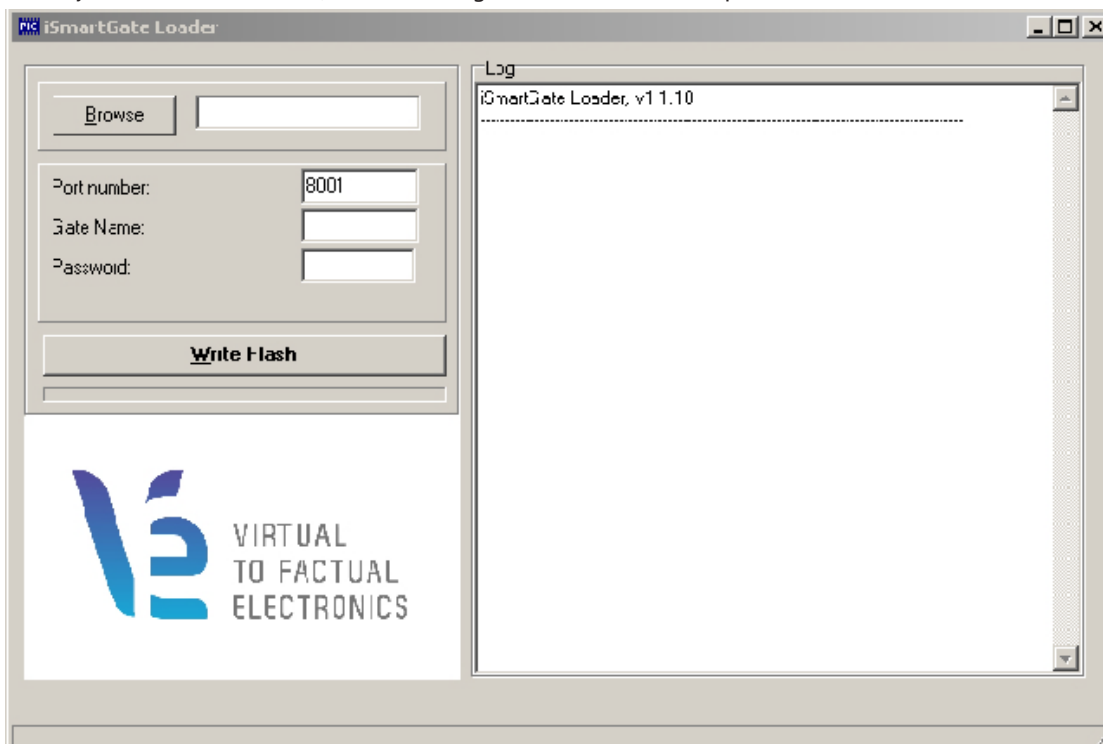


Figure 13. iSmartgateLoader

Requirements: The PC where you are running the iSmartGateLoader software needs to be connected to the same network where the iSmartgate-01W is, through the AP or Wi-fi router.

As the window shows up, follow these steps:

1. Click on the "Browse" button and search the firmware in the computer. The firmware you need to load is ".ISG", and you can find it at <http://www.v2fe.com/downloads.html>
2. Write on the **Port Number** field, the Port Number currently being used by your iSmartgate-01W that you want to upgrade.
3. Write on the **Gate Name** field, the Gate Name currently being used on the iSmartgate-01W that you want to upgrade.
4. Write on the **Password field**, the password being currently used on your iSmartgate-01W that you want to upgrade.
5. After completing the previous steps, you will already have set up the iSmartgateLoader on your PC in order to load the upgrade, but before doing so, you need to inform the device, that it is going to be upgraded.

Settings of the iSmartgate-01W in order to get the **new firmware from the iSmartGateLoader**:



Before the firmware's update, we recommend the user to take note or record the **GATENAME**, **PASSWORD** and **PORT** that appear in the unit's display. If these settings are wrong, the device will be locked for security. Make sure that the device is correctly connected to your network by checking the connection between iSmartgate APP and iSmartGate Device.

1. Press both **CANCEL** and **OK** buttons, at the same time, for 10 seconds.
2. The text "**UploadFW**" will appear on the display. Press OK to continue.
3. The text "**PressWri**" will appear no on the display. Please wait for at least 3 seconds. Then the display screen will turn off and on again.
4. At this moment, you are ready to click the "**Write Flash**" button on the iSmartgateLoader software, and the upgrading process will start.

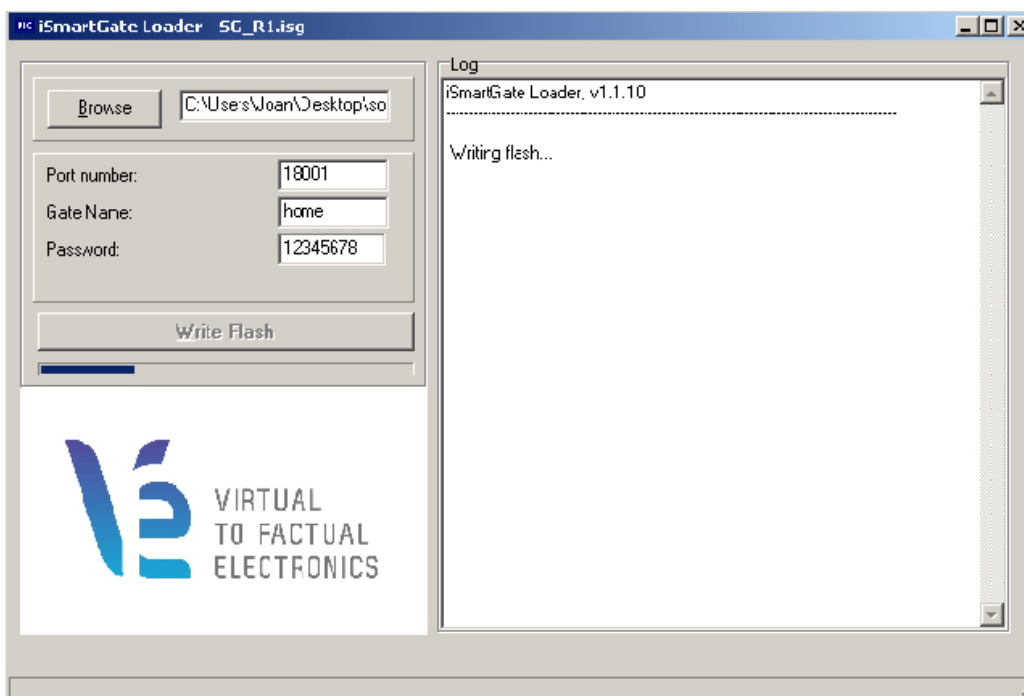


Figure 14. iSmartGateLoader writting flash

At this moment, it is really important **not to switch off neither the iSmartgate-01W nor the network cable not the router**.

If, for some reason, the upgrading process cannot be completed, your iSmargate-01W will not start, or, if it does, the display will remain with no data on it, or completely frozen.

If that is the case, please push the CANCEL button. Afterwards the unit's display will turn off and on again. Please continue from step 4.

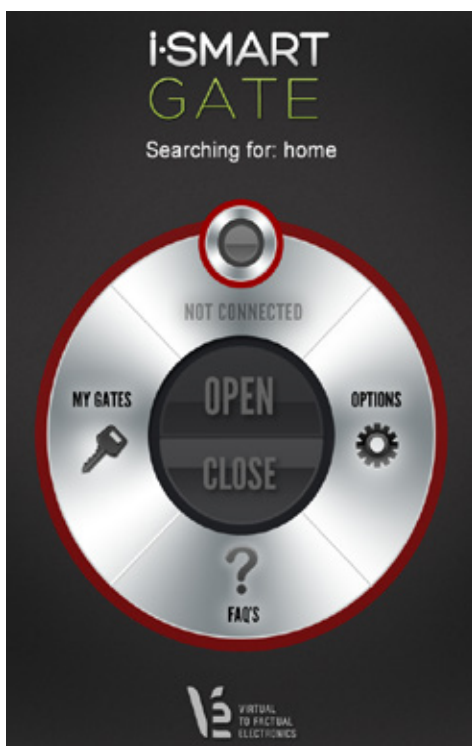
The **iSmartGate-01W** will load its previous configuration.

6. iSmartgate App Configuration

The **iSmartgate-01W** is able to control your Garage door's, when you are using it together with the **iSmartgate App**, available both for iOS (iPhone) or Android operating system.

You can download this app from:

- **Appstore**, if you are using an Apple product (<http://itunes.apple.com>)
- **Google Play**, if you are using a smartphone with Android operating system (<https://play.google.com/store>)



iSmartgate App main page:

NOTE: The following explanation will consider as "door", that door in which the iSmartgate-01W is already configured.

Once you download the iSmartgate app and open it, you will see on the main page a text saying: "**Searching for:**" This text will tell you which door is the App searching to control.

The red circle will appear as long as there is no connection between the iSmartgate App and the **iSmartgate-01W**.

The main reasons why there might be no connection between them are:

- Your smartphone and your **iSmartgate-01W** are not connected to the same wi-fi network.
- Some of the following fields: Password, GateName, or Mode do not match with the ones introduced on the **iSmartgate-01W**

Figure 15. iSmartgate Main page.

MY GATES button

If you press MY GATES, you will access to a specific page where you can manage all different doors where you have an **iSmartgate-01W** installed.

You can add new gates, delete those ones you don't want to manage with your iSmartgate App, and select the one you want to control on the Main Page.

OPTIONS button

If you press OPTIONS, you will access to a specific page where you can manage some options such as "Shake to Open" or "Automatic Open", but take into account that these options are only available if you have your iSmartgate-01W on mode GARAGE.

FAQS button

If you press FAQ's button, you will access to our FAQ's section, aimed to solve the most common doubts you may have while using iSmartgate.

6.1. Adding a New Door to the iSmartgate App

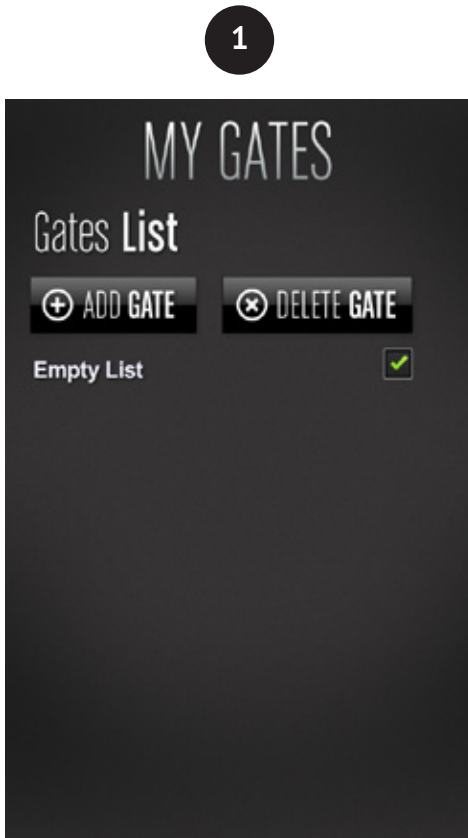


Figure 16. MY GATES Menu

The first time you enter into this section, there will be no gate predefined, so you need to tap "ADD GATE".



Figure 17. ADD GATE Menu

As you tap "ADD GATE", you will see a new page, where you can set up a new gate. These are the fields you need to fill in:

- **GATE NAME:** Please write here the same GateName introduced on the iSmartgate-01W (see section 4.2).
ATTENTION: Always write lowercase, and take into account that this field is also space sensitive.
- **PASSWORD:** Introduce here the same password configured on the iSmartgate-01W
- **TYPE:** Choose the same type you have selected on your iSmartgate-01W (section 4.4).

Once all these fields are set up, tap "SAVE GATE". After doing so, this door **will appear on the GATES LIST Menu.**

3

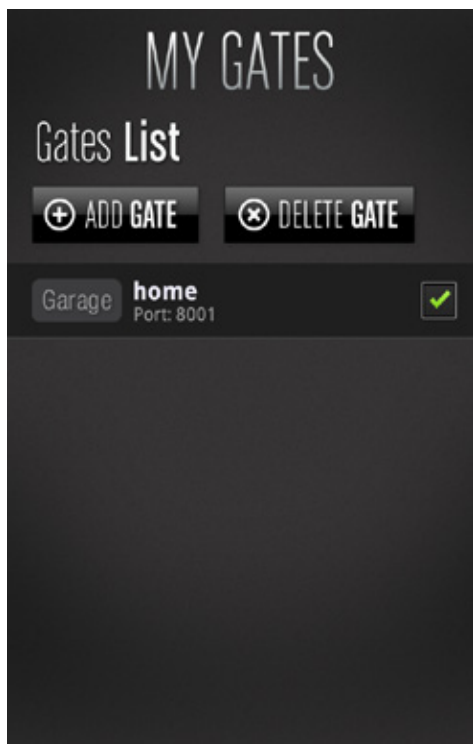


Figure 18. New door added to My Gates.

Once you have created a new door, select it by tapping on it. A check icon will appear next to the Gate's name.

You will also have information about the mode configured for each door (below the Gate Name) , and the network port it is using to connect. The password will not appear, for safety reasons.

4

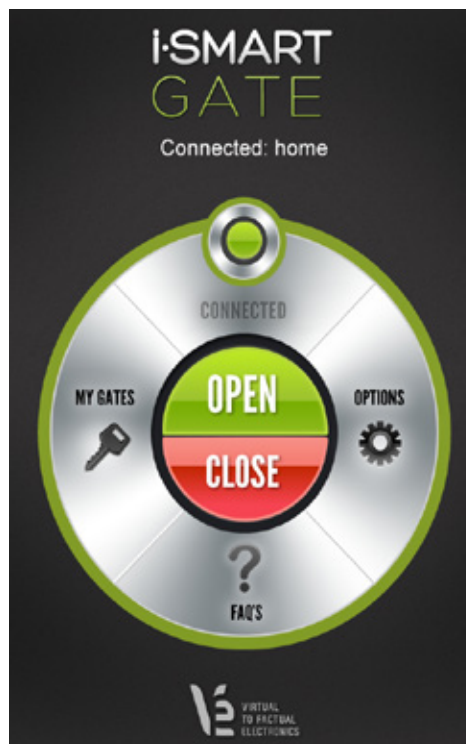


Figure 19. Connection OK

Once everything is set up, you can go back to the main manu by tapping “BACK”. If the iSmartgate-01W is already connected and correctly configured, **a message will appear on the main page: CONNECTED.**

You already have your iSmartgate-01W and your iSmargate App correctly configured and ready to use.

6.2 App Options

The iSmartgate App has an additional section on its main menu, called OPTIONS. If you tap on its button, we will be redirected to a page, where you will find 2 different options:

• Shake to Open

If you activate this function, you will be able to open or close the door by shaking your iPhone, as long as:

- You have configured your garage door with the Garage Mode
- You are connected (*see figure 19*).
- You are on the main page (*see figure 19*).

• Automatic Open

If you activate this function, your garage door will open as soon as you open the iSmartgate App on your smart-phone. This way, you won't need to tap two times in order to get your garage door open (one time to activate the app, and a second time to tap OPEN).

By only activating the iSmartgate App, your garage door will open, as long as:

- Your iSmartgate App is not running in the background.
- You are connected (*see figure 19*).



These 2 options are only available when you have your **iSmartGate device** configured on the GARAGE MODE. If you use ON/OFF or PULSE MODES, these options will not work.